

# Non-Driver ArcGIS Online Application

## Wisconsin Transit Riders Alliance Annual Meeting

**Ethan Severson**

**March 11, 2023**

# Wisconsin Non-Driver Advisory Committee

- Purpose: advisory forum to discuss and facilitate mobility, safety and access for Wisconsin's non-driving populations
- Focus: providing a safe and efficient multimodal transportation system including
  - Assess current transportation needs and barriers for non-driving populations
  - Review state agency and local transportation programs to understand their focus, purpose, and use
  - Identify funding needs and priorities for non-driving populations
- The committee membership includes state and local government, FHWA, legislators, academia, advocacy groups, mobility service providers and stakeholder transportation associations

# Application Overview

- The project is a geographic analysis of the Wisconsin non-driver population
- Produce estimates of Wisconsin non-drivers by county, city, village, town, census tract, and census block group
- Increase understanding of where non-drivers are located to inform regional planning and local/state government decision making
- Allow comparison of non-driver spatial data with existing transit service mapping, to identify 'hotspots' of underserved and unserved Wisconsin non-drivers
- Potential users
  - Service providers, regional planners, local governments and state agencies

# Methodology

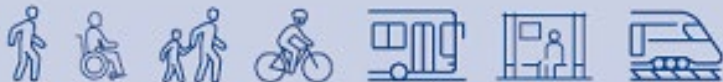
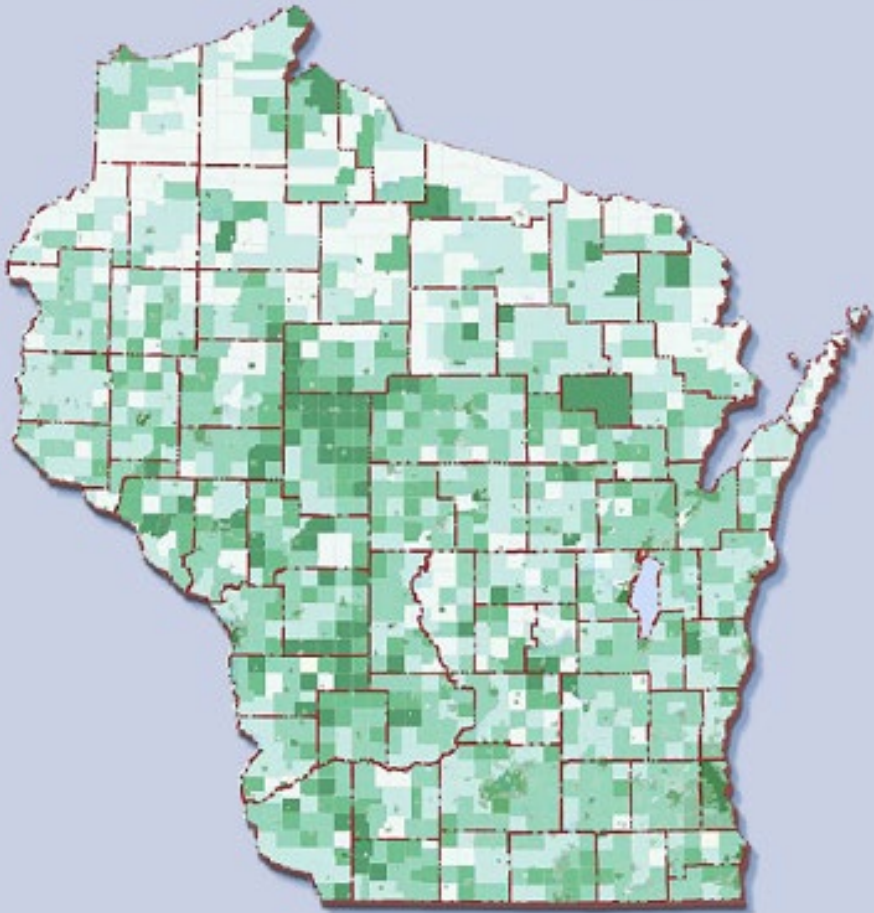
- Data sets used
  - DMV Driver and Vehicle datasets
  - U.S. Census Data
- Population density estimates of **non-drivers** in Wisconsin
  - U.S. Census population data – WI driver data = non-driver estimates
- Non-driver definition
  - No drivers license or drivers license but unknown access to a vehicle

Total Wisconsin Population	5,806,975
Percent Driver	69%
Percent Non-Driver	31%



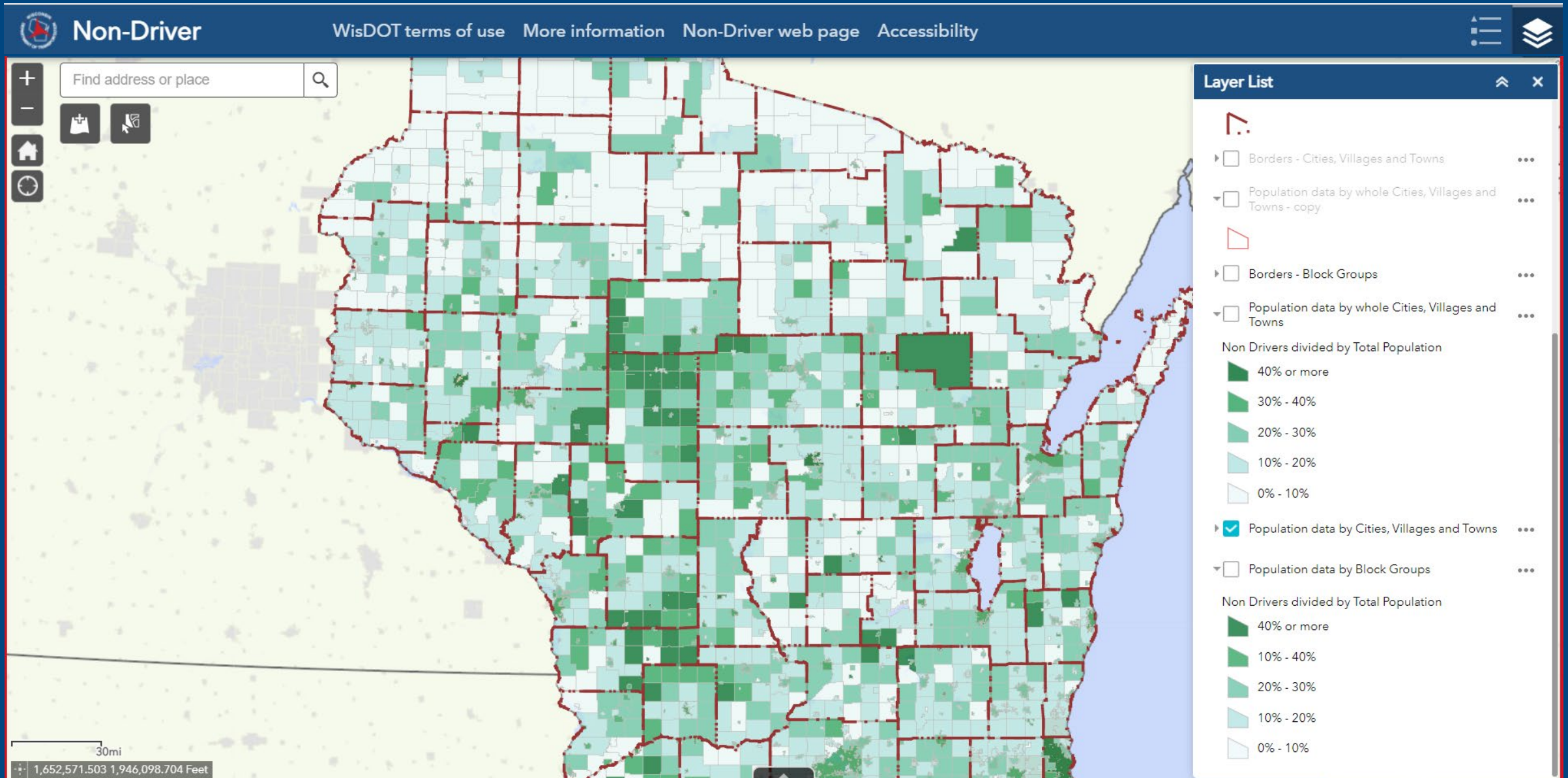
# Accessing the Application

- Published January 2022
- WisDOT frontpage > Key Department Initiatives > Wisconsin Non-Drivers
- Application resources also available:
  - YouTube video tutorial series
  - User guide document
  - Methodology and assumptions document





# Brief Demonstration



# Visit WiNDAC on the Web

- Read WiNDAC's charter, review meeting agendas and materials and see the list of members at:

<https://wisconsindot.gov/Pages/about-wisdot/who-we-are/comm-couns/windac.aspx>

- Visit the ArcGIS planning tool at:

<https://wisconsindot.gov/Pages/projects/multimodal/nd.aspx>





# Questions?

**Ethan Severson, Strategic Initiatives Officer**  
**Wisconsin Department of Transportation**  
**[ethanp.severson@dot.wi.gov](mailto:ethanp.severson@dot.wi.gov)**  
**(608) 266-1457**